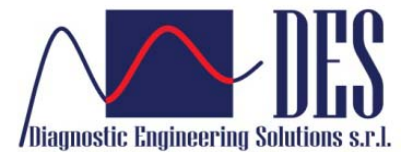


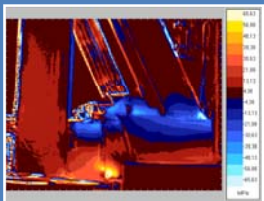
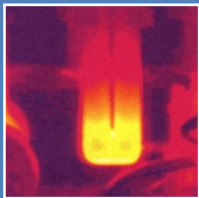
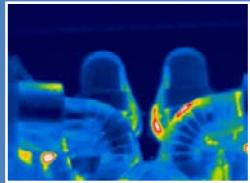
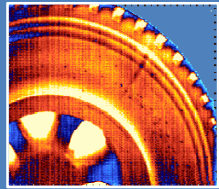
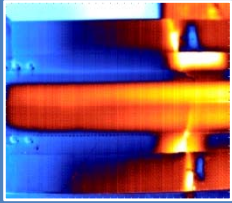
Controlli non distruttivi su giunti saldati



www.desinnovation.com



CONTROLLO SU GIUNTI SALDATI



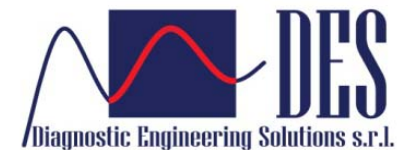
DES offre servizi innovativi di controllo dei giunti saldati.

Oltre al controllo con gli ultrasuoni, DES esegue ispezioni termografiche che permettono un'indagine veloce del pezzo e senza bisogno di contatto fra sonda e saldatura.

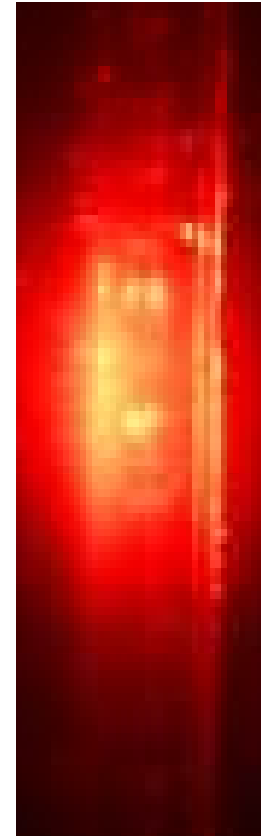
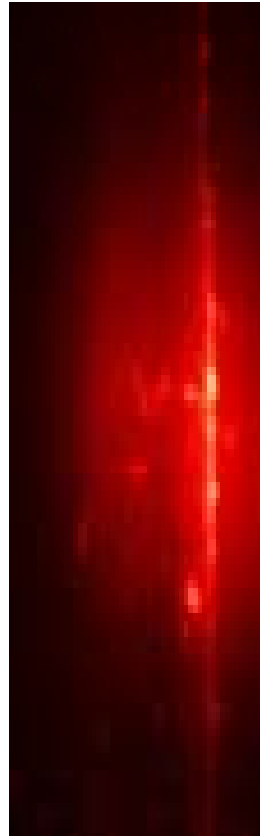
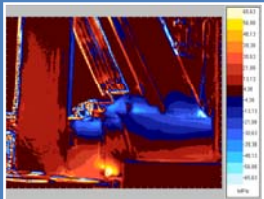
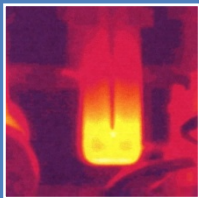
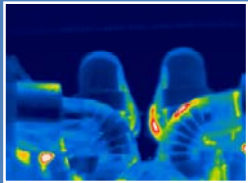
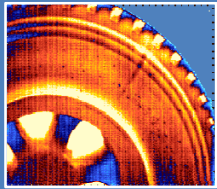
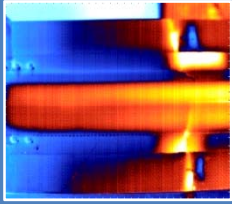
Le prove possono essere eseguite su qualsiasi tipo di saldatura, anche in punti difficilmente raggiungibili, e su qualsiasi tipo di materiale.



www.desinnovation.com



ANALISI DI GIUNTI SOTTILI SALDATI CON TERMOGRAFIA LASER



Anomalie all'interno e all'estremità di cordoni di saldatura

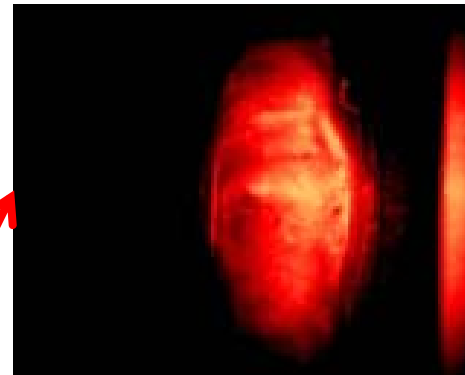


www.desinnovation.com



ANALISI DI GIUNTI SOTTILI SALDATI CON TERMOGRAFIA LASER

Tecnica Pulsata

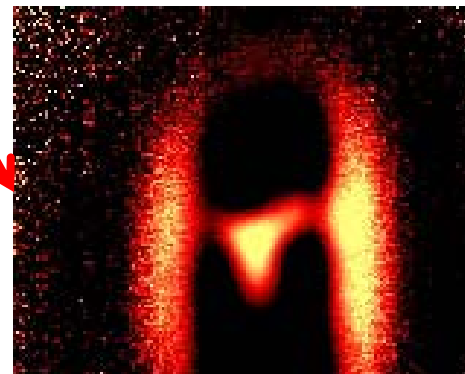


Sorgente di eccitazione:

LASER

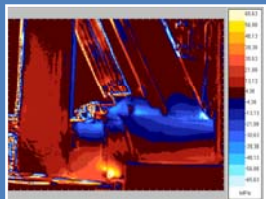
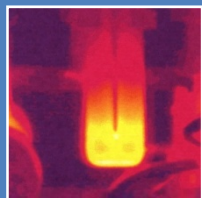
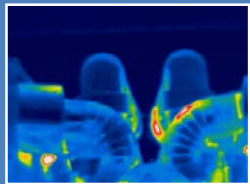
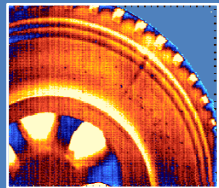
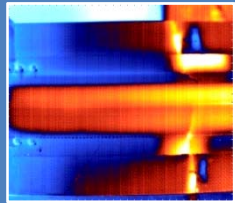
Riscaldamento localizzato in una zona più ridotta (spot).

Tecnica Lock-in

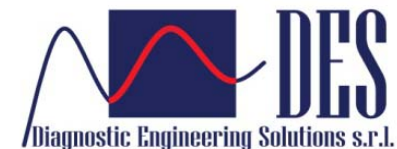


Data processing:

Algoritmi di analisi dei dati dedicati, in grado di effettuare il controllo in modo automatico o semi-automatico.



www.desinnovation.com



LENTI MACRO PER MIGLIORARE LA RISOLUZIONE SPAZIALE

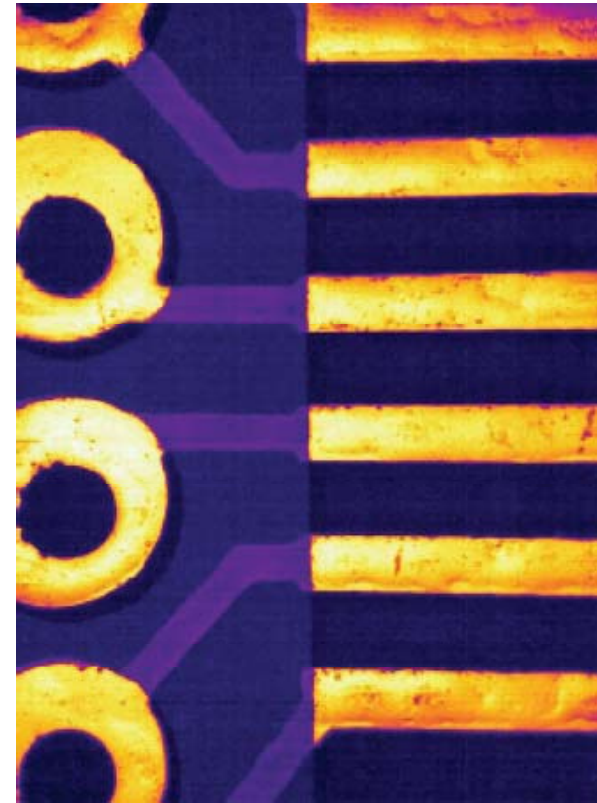
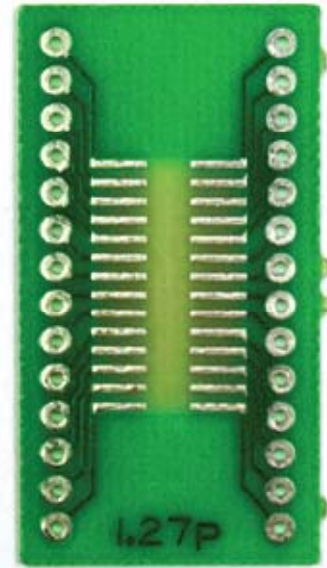
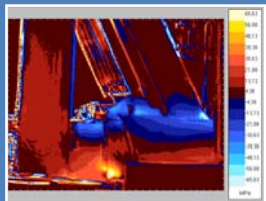
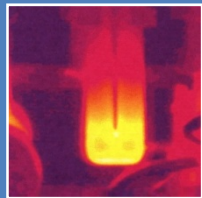
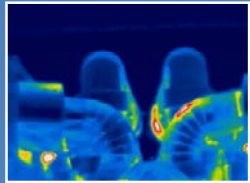
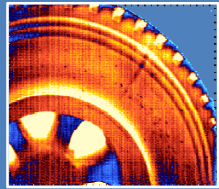
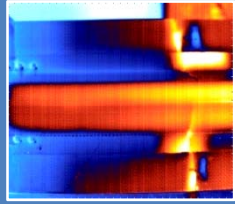
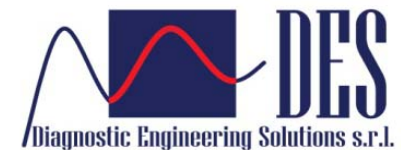


Image by FLIR

Risoluzione spaziale fino a 25 μm



www.desinnovation.com



VALUTAZIONE DEL LIMITE DI FATICA CON TECNICA TERMOELASTICA

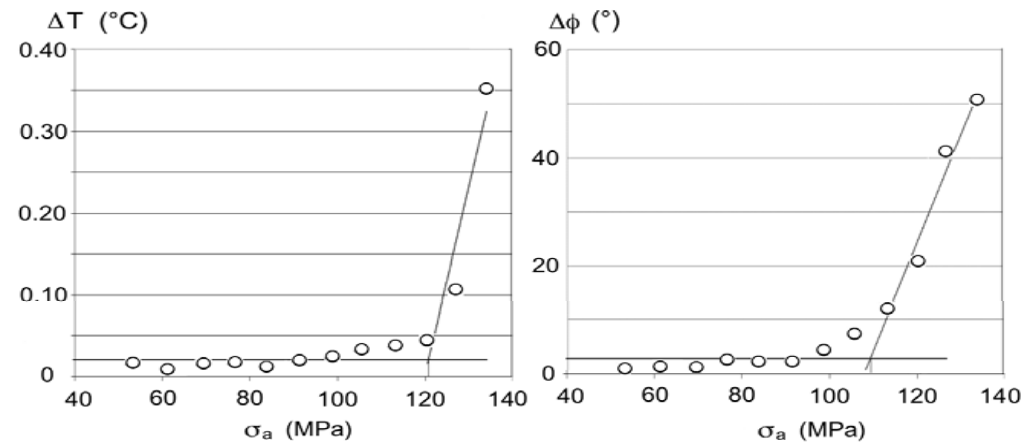
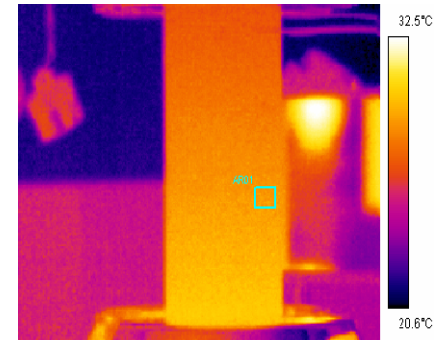
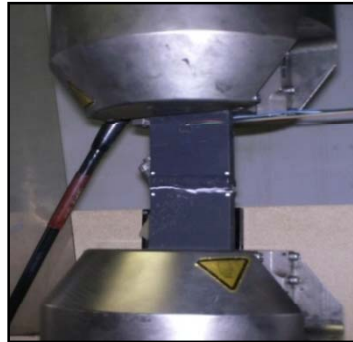
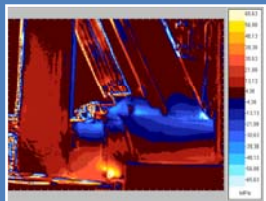
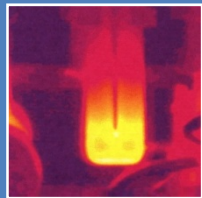
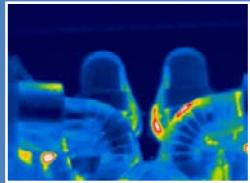
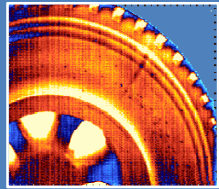
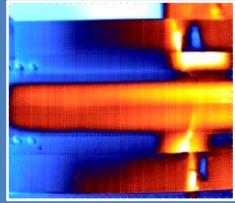
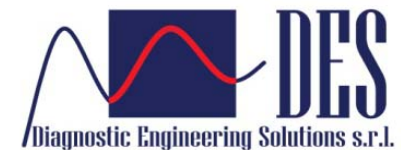


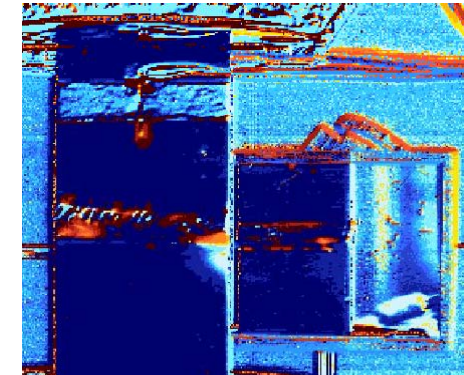
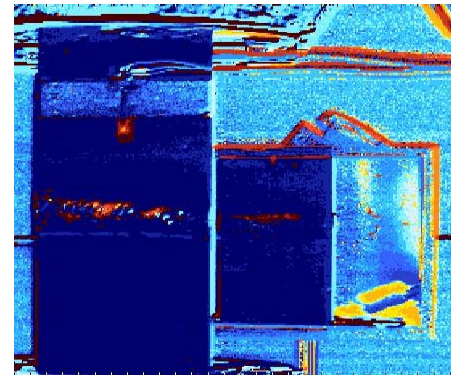
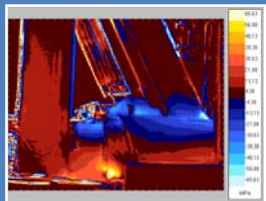
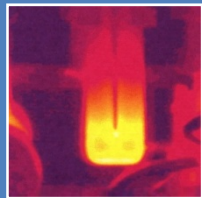
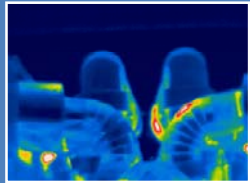
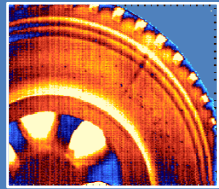
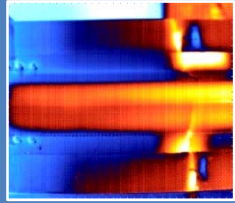
Diagramma Temperatura-Sollecitazione e Segnale di Fase termoelastico-Sollecitazione per la valutazione del limite di fatica



www.desinnovation.com



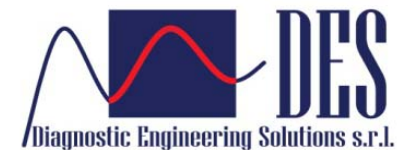
VALUTAZIONE DEL LIMITE DI FATICA CON TECNICA TERMOELASTICA



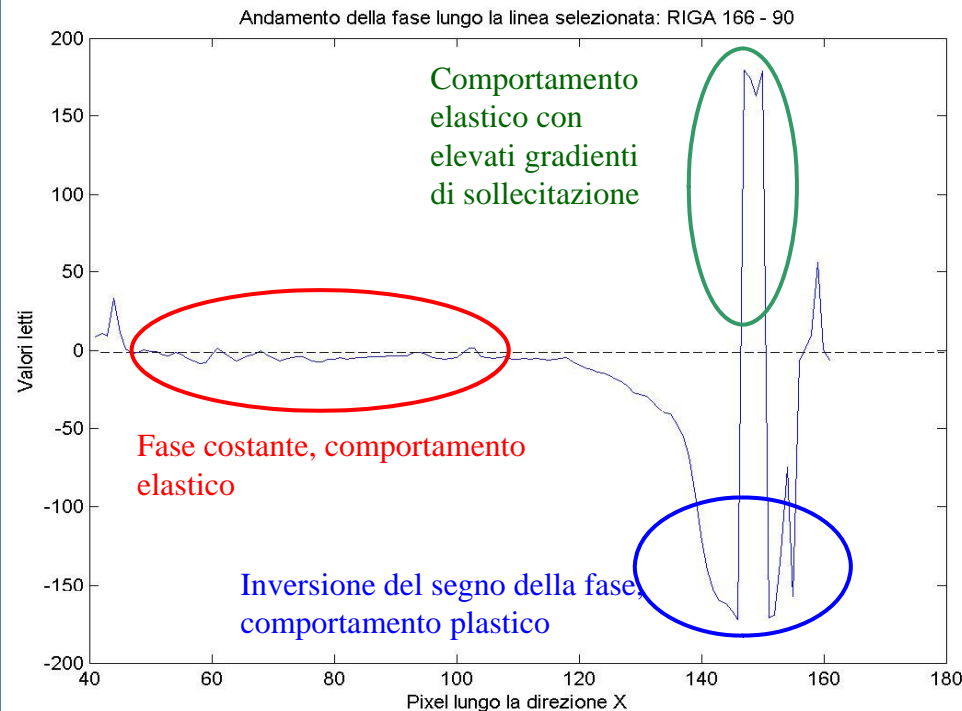
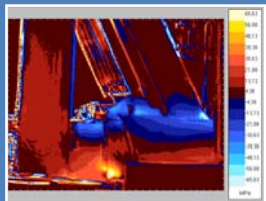
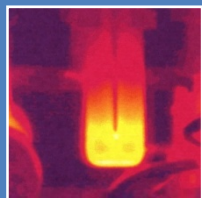
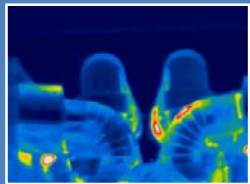
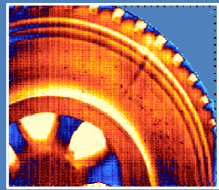
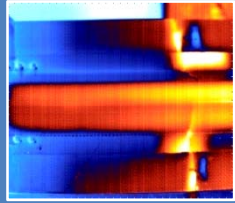
L'immagine termoelastica di fase permette la valutazione del danneggiamento del cordone di saldatura durante prove di fatica e per stabilire il punto di rottura del giunto.



www.desinnovation.com



VALUTAZIONE DEL LIMITE DI FATICA CON TECNICA TERMOELASTICA



L'indagine termografica consente di monitorare il comportamento non elastico e le dissipazioni plastiche nel materiale sottoposto ad una determinata sollecitazione. Questo comportamento permette di determinare il danneggiamento a fatica dei giunti saldati e di individuare precocemente le zone di potenziale innesco di rottura a fatica.



www.desinnovation.com

